



GLOBAL
FOREST
& TRADE
NETWORK



AN OVERVIEW OF WWF GFTN ACTIVITIES TO IMPROVE FOREST MANAGEMENT IN GHANA

CHATHAM HOUSE ILLEGAL LOGGING UPDATE AND
STAKEHOLDER CONSULTATION, LONDON, UK.

24-26 JANUARY 2007

BY: ABRAHAM BAFFOE
WWF-WARPO



OUTLINE OF PRESENTATION

- Forest Mgt context and key issues in Ghana
- Looking for solutions: The GFTN Approach
- GFTN Achievements
- Challenges
- Emerging Opportunities
- EU FLEGT & VPA: Too little too late?
- The Way Forward



FOREST RESERVE MANAGEMENT CONTEXT & ISSUES IN GHANA

Management Context

- Resource ownership
- Forest Mgt responsibilities and user rights
- Benefits sharing

Management Issues

- Poor forest mgt practices leading to conversions
- High levels of illegal harvesting and associated losses
- Weak Law enforcement and non-compliance
- Low technical capacity in certification & SFM
- High logging damage
- Poor relations between companies and communities
- High yield allocations and harvesting levels
- Inadequate systems for log tracking





LOOKING FOR SOLUTIONS: THE GFTN APPROACH

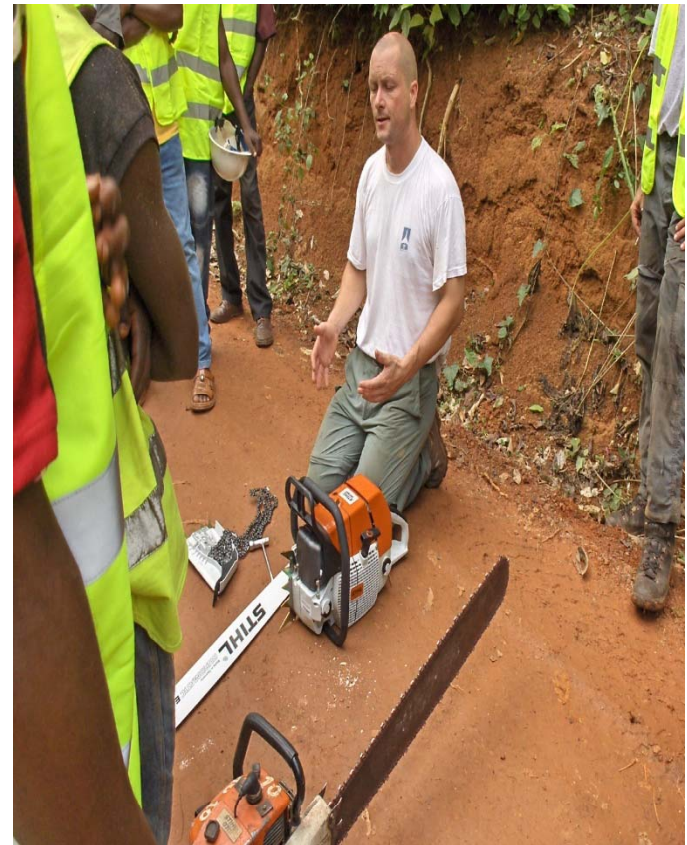
- ❑ Promoting forest mgt and CoC certifications
- ❑ Improving the standards of forest mgt (RIL, HCVF etc)
- ❑ Providing technical support and guidance to companies to meet challenges of responsible forestry
- ❑ Improving forest governance at local level (SRA)
- ❑ Combating illegal logging (Wood sourcing policies, COC)





ACHIEVEMENTS

- ❑ Improved awareness and understanding on certification
- ❑ Improved capacity on certification and SFM
- ❑ Training on certification HCVF and RIL (ProForest and FORM Int.)
- ❑ Pre-assessments for 8 companies (FR 385,584 ha), action plans prepared.
- ❑ Guidelines on certification, RIL and HCVF produced and in use.
- ❑ Training of local auditors (SmartWood & ProForest)
- ❑ Development of CoC by the companies
- ❑ Institution of a third party annual visits





CHALLENGES

- Govt's mgt practices as against requirements of certification & SFM
- FMP for many FMUs not yet developed/in use
- FMP development process not in compliance with requirements.
- Inconsistencies in timber rights allocations
- Current leases not conforming to laws and regulations
- Development of SRAs to include migrant communities
- Yield calculation not adequately adapted to forest conditions





CHALLENGES: Continue

- ❑ Tendency for a shift of attention from SFM and certification to legality
- ❑ Low operational standards compared to SFM requirements.
- ❑ Addressing problems outside the control of TUC/Lease holders.
- ❑ Illegal chainsaw operations as a serious threat to sustainability.





GLOBAL
FOREST
& TRADE
NETWORK



EMERGING OPPORTUNITIES

- ❑ Increasing concern about unsustainable forest mgt and illegal logging
- ❑ Buyers and consumers demand for legal and certified wood products
- ❑ Producers desire to maintain or access niche markets
- ❑ Emerging international issues eg EU- FLEGT, VPA, regional FLEG issues
- ❑ Increasing govt's concern about loss of forest and revenue (The VLTP)
- ❑ Adoption of certification in Ghana





EU FLEGT & VPA-Too little too late?

EU FLEGT & VPA might improve law enforcement and timber tracking in Ghana.

- Big gap between legality and sustainability requirements.
- Very little good forest left in Ghana.
- Many conversion options (cocoa, oil palm, tree plantations, mining etc).
- Need for additional measures now or no forest to produce legal timber.





GLOBAL
FOREST
& TRADE
NETWORK



THE WAY FORWARD

- ❑ Review of laws and regulations
- ❑ Enforcement of laws and regulations
- ❑ Increased national level commitment to legality, certification and SFM
- ❑ Increased buyers and consumers pressure for legal and certified wood products
- ❑ FLEGT, VPA etc are important but must be placed within the context of SFM





GLOBAL
FOREST
& TRADE
NETWORK



THE WAY FORWARD

- ❑ Favourable legal framework and incentives for supporters and practitioners of responsible forestry
- ❑ Govt needs to evolve from being forest manager to regulator.
- ❑ Institution of a Third Party Independent Monitoring system.
- ❑ Certification & SFM could then be achieved with pressure from both within and outside
- ❑ The need for all to recognise this reality





GLOBAL
FOREST
& TRADE
NETWORK



THANK YOU