

2014

Wood & Lumber Resource Guide

**Green
Enduring
Sustainable**

Wood, The Best Choice.

Presented by:



HLPA

Hawaii Lumber Products Association



Shipping to Hawaii?



**Serving Hawaii
since 1966**

**NEW Serving Hawaii Now!
"Columbia"**

Our Newest Hawaii Service Barge

- The Columbia can provide more frequent sailings
- 50% larger than Nestucca
- Reliable and efficient shipping
- Direct ocean transport from the Columbia River



www.sause.com

Contact us for assistance with
your shipping needs.

Call us at: **1-800-488-4167** or
Email us at: **shipping@sause.com**

BUILD BETTER



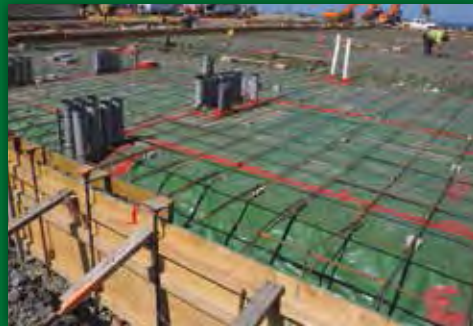
CUSTOM METAL ROOFING @ UH HILO



WALL PANELS & IKAIKA EWP @ HOLIDAY INN, KONA



STEEL FRAMING @ KA MALANAI, KAILUA



CONCRETE ACCESSORIES @ KAISER, KONA

FROM YOUR FOUNDATION TO YOUR
ROOF & EVERYTHING IN BETWEEN,
WE'LL HELP YOU BUILD BETTER



FOR STATEWIDE SERVICE

CALL US TOLL FREE 1-877-841-7633 OR VISIT US ONLINE AT HPMHAWAII.COM

The Green Factor: Building a Future with Wood

Wood has been used to construct homes since the dawn of mankind. It continues to be the most popular choice in residential construction today because it is readily available and sustainable. Now more than ever before, people are looking for ways to decrease their environmental impact while still creating a space that is comfortable, useful and beautiful. Building with wood, especially with all the recent technological advances made in the lumber industry, benefits both homeowners and the environment.





Wood-framing for a Holiday Inn in Kailua-Kona. The Johnson Construction project is set for completion this fall.

PHOTO COURTESY OF HPM BUILDING SUPPLY

In Hawaii, borate-treated lumber has earned a reputation for being both durable and green among the building and architectural communities. The fortitude of borate-treated lumber can be seen through its use in constructing local homes for the past few decades. Hawaii offers many challenges when it comes to building and maintaining homes because of the constant humidity and the variety of pests, including carpenter ants, roaches and Formosan subterranean termites—one of the most destructive species of termite. Through field tests and everyday use, borate-treated lumber has proven its worth by protecting Hawaii’s homes from the elements and unwanted pests.

A 2012 study released by the Treated Wood Council (TWC) shows that borate-treated lumber is not just durable, but its use in structural framing is far greener than the main alternative, galvanized steel. TWC did a life-cycle assessment that compares the environmental impact of both materials, including the total amount



Workers secure beams of lumber for Kailua-Kona Holiday Inn project.

PHOTO COURTESY OF HPM BUILDING SUPPLY

of water and fossil fuel expended from obtaining raw materials to the manufacturing, usage, transportation, recycling and disposition.

The study found that, on average, galvanized steel framing used nearly four times more fossil fuel and over 80 times more water in a life cycle than borate-treated lumber framing. Borate-treated lumber also was found to be greener in all tested pollutants, including greenhouse gases and smog.

Wood, unlike many other materials, is also a renewable resource. Despite what many people think, lumber is not just harvested from random forests. Many companies in the lumber products industry conduct business through sustainable and certified forestry. These companies are responsible for nearly half of all the trees planted each year.

Along with its green factor and

durability, wood provides many other benefits to homeowners. Because wood is renewable, it is readily available and continues to be in high demand, keeping prices competitive. It is also easier to work with and manipulate compared to other materials because it’s lightweight. Using wood for both the exterior and interior of a home allows for creative flexibility when it comes to initial

Finished wood-framed home in a plantation-style.



Installation of lumber trusses for Keaukaha Elementary Cafeteria in Hilo by GW Construction.



PHOTO COURTESY OF HPM BUILDING SUPPLY

design or future modification. The natural aesthetics of wood can help add warmth and richness to a home.

Wood is also a great insulator, which helps to regulate the temperature inside a home. This keeps energy bills low when it comes to cooling and heating. It also helps to reduce noise from outside and between rooms.

The benefits of building with wood continue to improve with engineered wood products (EWP). EWPs have been on the market for decades and include wood I-joists, laminated strand lumber, parallel strand lumber and laminated veneer lumber. EWPs boost wood's use and dependability.

Cross-laminated timber, or CLT, consists of layers of lumber oriented at right angles and glued together to form strong and stable structural panels. The technology has yet to catch on in Hawaii, but may be a solution in the near future for building needs in urban areas because CLT can be used in mid-rise developments.

The future of wood continues to look bright. It is the best choice when it comes to choosing a material to build a home that will be dependable and beautiful. ■

QUALITY PRODUCTS for Your Next Project



- Forest Products
- Engineered Wood Products
- Simpson Strong-Tie Hardware
- Nails & Fasteners
- Fypon Molded Millwork
- Atlantic Shutters
- L.J. Smith Stairs



RINELL WOOD SYSTEMS, INC.

CALL AUDREY, DAVE OR JESSICA AT **834-1344**

650 Kakoi St., Unit 200 • Honolulu, HI 96819

Fax: 835-1409 • E-Mail: info@rinellwoodsystems.com

Visit our new website - www.rwshawaii.com

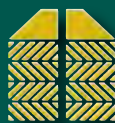


TRUS JOIST® TJI® JOISTS— THE #1 BRAND IN THE INDUSTRY

TJI joists were recognized in an annual national survey of builders as the #1 brand in quality, brand familiarity, recent usage and repeat usage. This says a lot about the trust builders have in our products and the support we provide.



BUILDING SUPPORT™



HAWAII'S #1 BUILDING MATERIALS DISTRIBUTOR

HONSADOR LUMBER LLC

HONOLULU: 808.682.2011
MAUI: 808.877.5045
HILO: 808.961.6000

KONA: 808.329.0738
KAUAI: 808.246.2412
www.honsador.com



Wood ■ It's Not Just for Framing Hawaii Homes

Wood is one of nature's most wondrous materials. Wood possesses both depth and beauty, naturally. When you clear-coat a natural wood or oil it, the luster, color and beauty of the wood grain is unparalleled to anything else in nature.

Wood is a very long-lasting material. With modern and technologically advanced finishings, wood is a primary material used in Hawaii's homes today. Additionally, materials that use the clear-coating process provide increased longevity. Once finished for interior use, protected wood will provide longevity and beauty. Your wood "items" in your home will last even longer if you pay close attention to any problem areas such as cracks or warping which can all be easily fixed if caught early in the process. To maintain wood, you simply wipe and dust and it will last a long time.

For Hawaii homes, some of the most popular woods include cherry,

maple, birch, white oak (ruffed white oak) and two types of mahogany, including African mahogany, a real favorite. Birch and maple are excellent for cabinets as the lighter colors make

it is much easier to see, and these types of wood tend to be less expensive than other grades.

One of Hawaii's leading hardwoods expert, Plywood Hawaii



Golden wooden floors highlight this Hawaiian home.

President Connie Smales says, “A new trend in kitchen cabinets is to use a rich, dark wood for the outside face/ cabinet door, and use a lighter wood for the interior of the cabinets, such as birch or maple. As beautiful and dramatic as these darker and richer woods such as African mahogany or cherry are, they tend to be a bit too dark for the interior and make it difficult to see inside the cabinet.”

Another major use of wood in local homes is flooring. Currently, the marketplace provides a wide variety of both natural and engineered hardwood flooring. These are available in the

Just a few of the uses for wood in our local homes today: cabinets, doors, floors, paneling, shelves, ceilings, moldings, columns, entertainment centers, decks and other types of storage.

traditional planking and in engineered planks and tiles. Engineered, in this case, means a thick veneer (up to three-eighths of an inch) on a plywood base. The traditional planking requires a joist or other wood piece to which it is nailed; the engineered products can be glued down so a tack strip does not have to be added to a concrete floor. The engineered planks come in varying lengths and typical widths of 3, 4.25 or 5.25 inches. Currently, wide-plank floor is increasingly popular due to its beauty and lesser seams.

The wide variety of woods currently available include: traditional oak, maple, birch, walnut, tropical wood, such as ipe, tigerwood, sakura, jatoba, and of course a relatively new favorite in Hawaii, bamboo. These flooring products come pre-finished in a wide variety of stains and with an extra-hard, durable protective finish. Additionally, another new trend becoming more popular each year are specialized distressed woods and reclaimed woods offering a rustic look.

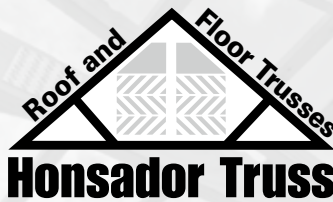
One of the most useful, durable

and beautiful building materials available for homeowners is wood. Not only is it sustainable and green in more ways than other building materials, it adds warmth to the interior of any home. ■



Rich, dark wood cabinetry throughout the kitchen

KEEPING YOUR PROJECT ON TIME AND ON BUDGET



- ❖ Over 30 years Providing Trusses in Hawaii
- ❖ Highly Trained Technical Staff
- ❖ Competitive Pricing
- ❖ Certified Truss Manufacturer

OAHU
Kapolei
808-682-5859

KAUAI
Lihue
808-246-2412

BIG ISLAND
Kailua
808-329-0738

Hilo
808-969-6696

ALOHA MARINE LINES



For sailing schedule, rates or bookings:
call (800) 426-3113 or visit www.acthi.com

The Lynden Family of Companies

Meet Some of Our Members ...

Truss Systems Hawaii

Truss Systems Hawaii is Hawaii's Truss Leaders



We design and manufacture the highest quality wood and steel trusses serving all the Hawaiian Islands. With 30 years' experience building trusses in Hawaii, we have built projects on all the Islands. Our state of the art facility allows us to provide the highest quality product and service, short lead times and competitive pricing on both wood and steel trusses.

Our new TrussSHED™ storage buildings are custom-built storage solutions, "Just what you want and need."

For more information, please visit www.TrussSystemsHawaii.com or call (808) 877-0036.

Simpson Strong-Tie

For nearly 60 years, Simpson Strong-Tie has focused on creating quality structural products that help people build safer and stronger structures. Simpson Strong-Tie is one of the largest suppliers of structural building products in the world. Simpson manufactures exceptional products, provides full-service engineering and field support, and conducts product testing and training. Simpson Strong-Tie works closely with industry professionals to provide code-listed, field-tested products, and value-engineered solutions. Its product lines include Structural Connectors, Fasteners, Lateral Force Resisting Systems, Truss Engineering Software and Plates, as well as Concrete Repair and Anchor Systems.



For more information, please visit www.strongtie.com or call (808) 479-1216.

HPM Building Supply

What better testament to the long-term value of wood products than a company that has sustained itself 93 years providing them? Since its founding in 1921 as a planing mill in Hilo, HPM Building Supply has grown to add Kauai and Oahu branches to four locations on Hawaii Island. Over the same time, it evolved into a 100% employee-owned company. That's right. Every time you visit HPM, one of its 248 "owners" takes care of you. Through generous donations by the HPM Foundation, these same good folk support Hawaii nonprofits such as Habitat for Humanity, Junior Achievement and Easter Seals.



For more information, please visit www.hpmhawaii.com or call (808) 682-8560.

Honolulu Wood Treating LLC (HWT LLC)



In business for nearly 59 years, Honolulu Wood Treating LLC (HWT LLC) continues to provide quality products and services to Hawaii's building industry. Originally founded in 1955 as a wood treatment plant, HWT LLC also provides wholesale distribution of products such as Trus-Joist/Parallam, Simpson Strong-Ties, Dupont Tyvek, Rosboro Glulam, Kwikset, and Knotwood out of its Kapolei facility.

Other services include Engineered Wood Products (EWP) floor design, value engineering, and take-offs utilizing Weyerhaeuser's Javelin software.

Our team of product specialists is always ready to help!

For more information, please visit www.hwthawaii.com or call (808) 682-5704.

Structural Pest Control, Inc.

Structural Pest Control, Inc. is a locally owned, family run business, which has been doing business in Hawaii since 1983. The primary emphasis of our business is the prevention and control of ground termites. Along these lines, we also have strong ties to the wood preservation industry. We have been providing inspection and other professional services to various companies operating in Hawaii in support of their wood preservation or related businesses.



For more information, please visit structuralpest.com.

Kop-Coat



TRIB® and TRU-CORE® programs for our forest products and wood treatment partners continue to provide the highest protection to engineered wood products in Hawaii.

Patented protection technologies developed by Kop-Coat for Hawaii, tested in Hawaii, and recognized in the City and County Code, provide protection against Hawaiian termites and decay.

TRU-CORE process wood penetration technology is now used to protect many wood products in the home, on the home, around the home and for industrial uses. Durable I-joists, trim boards, fencing and railway ties are a few examples.

For more information, please visit www.kop-coat.com or call (412) 227-2426.





Trus Joist by Weyerhaeuser



At Weyerhaeuser we grow trees and make wood products that improve lives in fundamental ways. We create imaginative, sustainable solutions to the world's challenges. Our Engineered Wood Products—TJIs, Timberstrand, Microllam and Parallam—represent some of our most innovative solution oriented building products. These innovations were fueled by the ingenuity of our people—our employees, customers, suppliers and the communities around us. Together we make the most of one of our planet's most valuable renewable resources. Through local business partners we deliver our products, technical services and sales support to engineers, architects and builders. Weyerhaeuser supports many community-based organizations including the Boys & Girls Club, Habitat for Humanity & United Way.

For more information, please visit www.weyerhaeuser.com or call (808) 525-5440

Aloha Marine Lines



Aloha Marine Lines is the new brand for Aloha Cargo Transport—a member of the Lynden family of companies. Lynden has a clear mission: Put the customer first, deliver quality, and be the best at what you do.

Over land, on water, in the air—or in any combination and all over the world—Lynden always excels. We provide superior service to industries as diverse as oil and gas, mining, construction and manufacturing.

AML continues in the tradition of alternate week sailings from Seattle with a cost-effective transportation solution that has come to be relied upon all around the state.

For more information, please call us at (808) 536-7033.

Armstrong Builders



Founded by Robert Armstrong in 1976, Armstrong Builders is a recognized leader in Hawaii's residential and commercial construction markets. Armstrong Builders offers a range of services including the construction of new custom homes, commercial and residential renovation projects, and luxury resort and condominium development. The company has built a reputation for award-winning projects, high quality building design and a commitment to client satisfaction. Well known for its "green" projects, five staff members are LEED certified and several projects have gold and silver LEED certifications.

For more information, please visit www.ArmstrongBuilders.com or call (808) 848-2484.



Osmose

Osmose. The Trusted Name in Wood Preservation Since 1934.



Hi-bor® brand borate pressure treated wood was developed to meet the special durability and termite protection needs of Hawaii. The Hi-bor 20-year residential limited warranty is the original warranty for borate pressure treated wood in Hawaii. Hi-bor products have become Hawaii's building material of choice.

Hi-bor is the only borate treated wood product with GreenGuard certification. Hi-bor treated wood is low in VOCs and is suitable for use in sensitive environments such as schools, hospitals and residential construction.

Hi-bor pressure treated wood technology has also been approved for points toward National Green Building Certification to the National Green Building Standard.

For more information, please visit www.osmosewood.com.

Maui's Trusted Name in Trusses



PROJECT #10,102
RESIDENTIAL CONSTRUCTION

With over **50 years** combined experience, we are Maui's trusted choice in trusses. In fact, with **10,121 completed projects**, nobody has built more trusses on Maui. Count on Truss Systems Hawaii to provide experience, service, and professionalism with the latest in precision equipment and technology.



Call or Email for a Free Estimate: 808-877-0036, sales@trussys.com

Rinell Wood Systems, Inc.



Rinell Wood Systems, Inc. is a small, family business founded in 1979. Our business is primarily with contractors; however, we do also provide materials to homeowners. Rinell Wood Systems, Inc. brings in lumber, plywood and engineered wood products. We are also one of the largest stocking dealers of Simpson Strong-Tie products in Hawaii. Simpson Strong-Tie offers framing hardware, fasteners and anchoring systems.

Other specialty products offered include Fypon, Azek and Timbertech products, L.J. Smith Stair Systems, Tyvek, Flex Trim, Green Guard sill sealer, and much more. Rinell Wood Systems, Inc. offers extensive product knowledge and exceptional service to all of our customers. In addition to HLPA, we support Hawaii's construction industry with memberships in the BIA-Hawaii, GCA of Hawaii, SEA/OH, Hoo Hoo International, and the National Association of Women in Construction (NAWIC).

For more information, please visit www.rwshawaii.com or call (808) 834-1344.

Plywood Hawaii Inc.



Plywood Hawaii was founded by Fred and Connie Smales in 1994.

Led by President Connie Smales, Plywood Hawaii is Hawaii's leading plywood supplier to Hawaii.

Plywood Hawaii provides a vast array of products including an extensive pre-finished plywood line and a full line of construction grade plywood. We offer products for flooring, hardwoods, laminates, sidings, OSB, MDF, overlays, marine, veneers, particle board, hardboard, hardwood lumber and edge banding.

Plywood Hawaii is conveniently located in Mapunapuna, in central Honolulu, right off the H-1 Freeway. Offering Hawaii's largest and most complete inventory of plywood and structural panels. Plywood Hawaii is staffed with knowledgeable specialists who are happy to assist you with your commercial and residential projects, of all sizes. We are competitively priced and special orders are available.

For more information, please visit www.plywoodhawaii.com or call (808) 834-1144.

**Serving Hawaii
For Over 30 Years!**



**Specializing in Commercial &
Residential Rough Framing**

(808) 262-8626 • Fax (808) 262-8429

Lic# BC-10638





Hardware Hawaii
 Hardware Hawaii: Locally
 owned and operated for
 60 years!



**CONTRACTOR'S
 CHOICE**

Ever since Dana and Mary Lundquist founded Hardware Hawaii in Kailua 60 years ago, we've been dedicated to bringing the contractors and homeowners of Hawaii everything needed for construction and home improvement with fast and friendly Customer First! Service. This philosophy has given Hardware Hawaii its reputation for legendary customer service. With son David at the helm as owner/president since 1982, we have continued to thrive, buying directly from the mills, delivering the highest quality products. We have all your needed building materials on the ground, when you need them, and in stores where you buy them.

You'll understand why our customers keep coming back again and again.

Hardware Hawaii locations: Kailua, Kapolei, Mapunapuna and Koloa.

For more information, please visit www.hardwarehawaii.com or call (808) 266-1133. ■

Gentry Homes Hawaii Inc.



Over the years, a Gentry Home has come to represent the very best in new home construction.

Gentry Homes, Ltd. began building in Hawaii in 1968 with 510 acres of land in Central Oahu, today known as Waipio Gentry. Since 1968 we have built more than 12,000 homes and many commercial and industrial developments.

As Tom's passion as a developer grew, he continued to develop master-planned communities while expanding his commercial and industrial developments.

When you visit the master planned community in Ewa By Gentry you will discover why the Gentry name has become the one trusted by thousands. Beauty, green living, affordability and unmatched quality create the home of your family's dreams. Our Vision: People Building Quality Homes and Communities for a Better Hawaii.

For more information, please visit www.gentryhawaii.com or call (808) 685-0811.

Sause Bros.

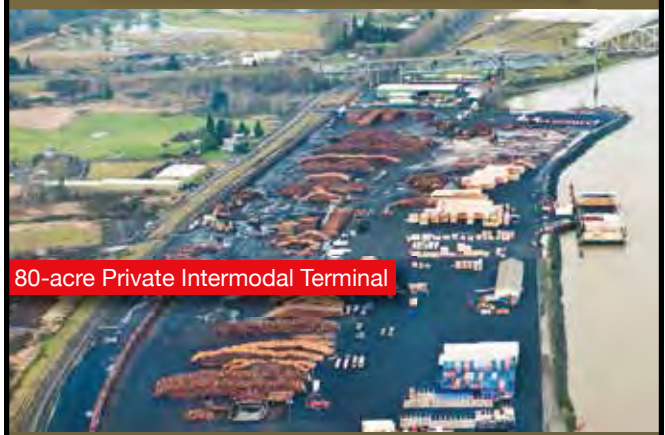
For over 80 years, Sause Bros. has served the Pacific Rim with superior marine transportation services. Sause provides a full range of services: from ocean towing, cargo handling, and ship assist, to marine construction and repair.



We're dedicated to providing the highest quality of service, with certifications in both the International Safety Management Code and the American Waterways Operators Responsible Carrier Program. Whether it's lumber, plywood, paper, petroleum products, chemicals, bulk commodities, containers, oversized, overweight, or specialty cargoes, we have the people, the equipment, and the expertise to meet our customers' needs.

For more information, please visit www.Sause.com or call (800) 488-4167.

Serving Hawaii
 from the Heart of Lumber Country



80-acre Private Intermodal Terminal

- Strategically located
- Barge-truck-rail served
- On-site trucking fleet
- Minutes to Interstate Highway System



(503) 556-0410 Office
 (503) 556-2805 Fax
 PO Box 247
 29191 Dike Road
 Rainier, Oregon 97048

www.TeevinBros.com



HLPA MEMBERS

Hawaii Lumber Products Association

Visit us at www.HawaiiLumber.com



ALOHA MARINE LINES
(dba Northland Services, Inc.)
Richard Maxwell, Vice President,
206-892-2750



ARMSTRONG BUILDERS
Jim Keller, President,
808-848-2482



GENTRY BUILDERS, LLC
Robert Kayser, Jr., Vice President/Director
of Construction, 808-447-8580



HARDEL PLYWOOD CORPORATION
Tracy Hogden, 360-740-0232



HARDWARE HAWAII
David Lundquist, President,
808-266-1133



HONOLULU WOOD TREATING, LLC.
(dba. HWT, LLC)
Hap A. Person, President, 808-682-5704 x108



HONSADOR HOLDING LLC
Wayne Lincoln, Executive VP, Sales &
Marketing, 808-682-2011



HPM BUILDING SUPPLY
Michael K. Fujimoto, President/CEO, 1-808-966-5636



KELLEHER CORPORATION
Chris Shively, General Manager,
808-833-1802



KOP-COAT, INC.
Hans A. Ward, Business Manager,
412-227-2675



KUZMAN FOREST PRODUCTS
Greg Thelen, Owner/Sales,
800-547-0230



MATSON NAVIGATION COMPANY
Gary Y. Nakamatsu, Vice President-Hawaii
Sales, 808-848-1211



MCCABE HAMILTON & RENNY CO., LTD.
Jeff Fahling, 808-524-3255 x232



MCGRIFF LUMBER
Doug McGriff, President, 503-663-6330



MENDOCINO FOREST PRODUCTS
Dave Kimball, General Manager Hawaii,
808-226-4422



MIYAKE CONCRETE ACCESSORIES, INC.
David Miyake, Owner/CEO, 808-244-7988



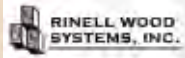
OSMOSE, INC.
Mark Blattie, Western Regional Manager,
303-355-2709



PACIFIC WOOD LAMINATES, INC.
Ken Caylor, Sales Manager, 541-469-2136



PLYWOOD HAWAII, INC.
Connie Smales, President,
808-834-1144



RINELL WOOD SYSTEMS, INC.
Dave Rinell, President, 808-834-1344



ROYAL PACIFIC INDUSTRIES
Michael K. Von Pinnon, President,
503-434-5450



SAUSE BROTHERS
Erin McClanahan, Hawaii Marketing
Manager, 503-222-1811



SCOTT LUMBER COMPANY
John D. Scott, Owner, 503-297-4815



SIMPSON STRONG-TIE
Tim Waite, Sr. Territory Manager, 808-479-1216



STRUCTURAL PEST CONTROL
Ainsley Ahlo, President, 808-483-4444



SUNRISE CONSTRUCTION, INC.
Marcus Gillespie, President, 808-262-8626



TEEVIN BROS LAND & TIMBER CO., LLC
Shawn Teevin, Owner, 503-556-0410



TRUS JOIST BY WEYERHAEUSER
Keith Cuthbert, Western Sales Rep,
1-800-525-5440



TRUSS SYSTEMS HAWAII, INC.
Scott Loomer, President, 1-808-877-0036



YOUNG BROTHERS, LIMITED
Mathew J. Humphrey, Vice President &
General Manager, 808-543-9494

Scan this QR Code for bonus company information on qualified industry partners. Or, visit us at BuildingIndustryHawaii.com





**Honsador
Premium**

Hilo • Kauai • Kona • Maui • Oahu

**Proudly
Serving Hawaii's
Builders for the
Last 79 Years**

Honsador "Premium"
*is the new industry standard for
the finest, freshest and on or
above grade lumber and plywood
available in Hawaii.*

Over the years Honsador has been known for Quality and Service. Our competitors may claim to have top grade materials and service - The difference is we deliver on that Promise everyday - on every order. Careful selection and alliances with top quality - high end mills assures our contractor customers have the best and freshest lumber available in the islands. Look for our name on your next load of lumber. Ask for **Honsador "Premium"** by name.




Honsador Lumber

Oahu 808.682.2011 • Hilo 808.961.6000 • Kona 808.329.0738

Maui 808.877.5045 • Kauai 808.246.2412

www.honsador.com



The original “No Glue” fastening solution for subfloors

Save time and reduce cost by installing subfloors without glue using the code-listed Quik Drive® WSNTL subfloor screw. Compared to pneumatic nails that can loosen over time, WSNTL screws pull the subfloor and joist tightly together, eliminating gaps that cause floors to squeak and costly callbacks.

WSNTL screws are available in a variety of lengths for subfloor, sheathing, sill plate and stair thread applications using the Simpson Strong-Tie® Quik Drive® auto-feed screw driving system. Learn more by calling (800) 999-5099 or at www.strongtie.com/subfloor. To speak with a Simpson Strong-Tie representative in Hawaii, dial (808) 479-1216.

SIMPSON
Strong-Tie

®